

A little preparation can save a mountain of heartaches.



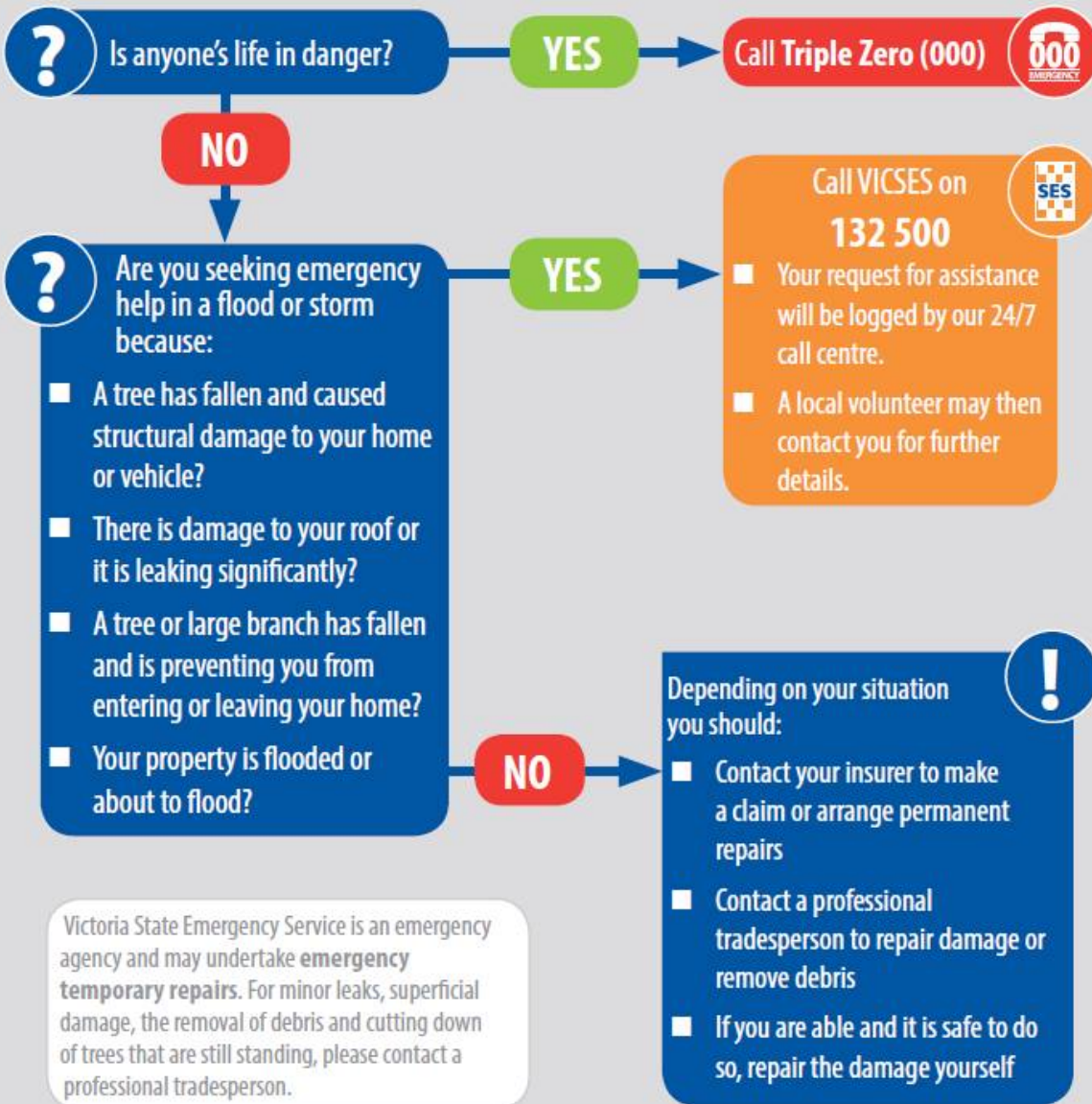
Be prepared

Chelsea SES are always there when you need our help, but there are a number of things that you can do, to give yourself, the best chance to avoid damage or injury in a storm or flood situation.



When should I call SES in a flood or storm?

During severe weather the demand on SES volunteers is huge. A large volume of calls may mean that jobs need to be prioritised. This card contains a quick self-assessment that everyone can use to help SES volunteers assist those that are most in need.



Victoria State Emergency Service is an emergency agency and may undertake **emergency temporary repairs**. For minor leaks, superficial damage, the removal of debris and cutting down of trees that are still standing, please contact a professional tradesperson.

To find out how to prepare for severe weather visit

ses.vic.gov.au

When should I call SES in a flood or storm? This card contains a quick self-assessment that everyone can use to help SES volunteers assist those that are most in need.

Victoria State Emergency Service: Chelsea Unit - Helping you to help yourself

Written by Administrator

Friday, 03 February 2012 09:40 - Last Updated Thursday, 22 March 2018 07:57



Bikes and bins and other loose things can become airborne in high winds



Outdoor furniture can start like this...



Family Home Emergency Kit



Be aware that the wind can fall with great force and significant damage can be done to the structure of the house.



Wind can lift and throw objects, including cars and other vehicles, into the air.



Minister for Health and Human Services



Be aware that floodwaters can rise quickly and become very dangerous.